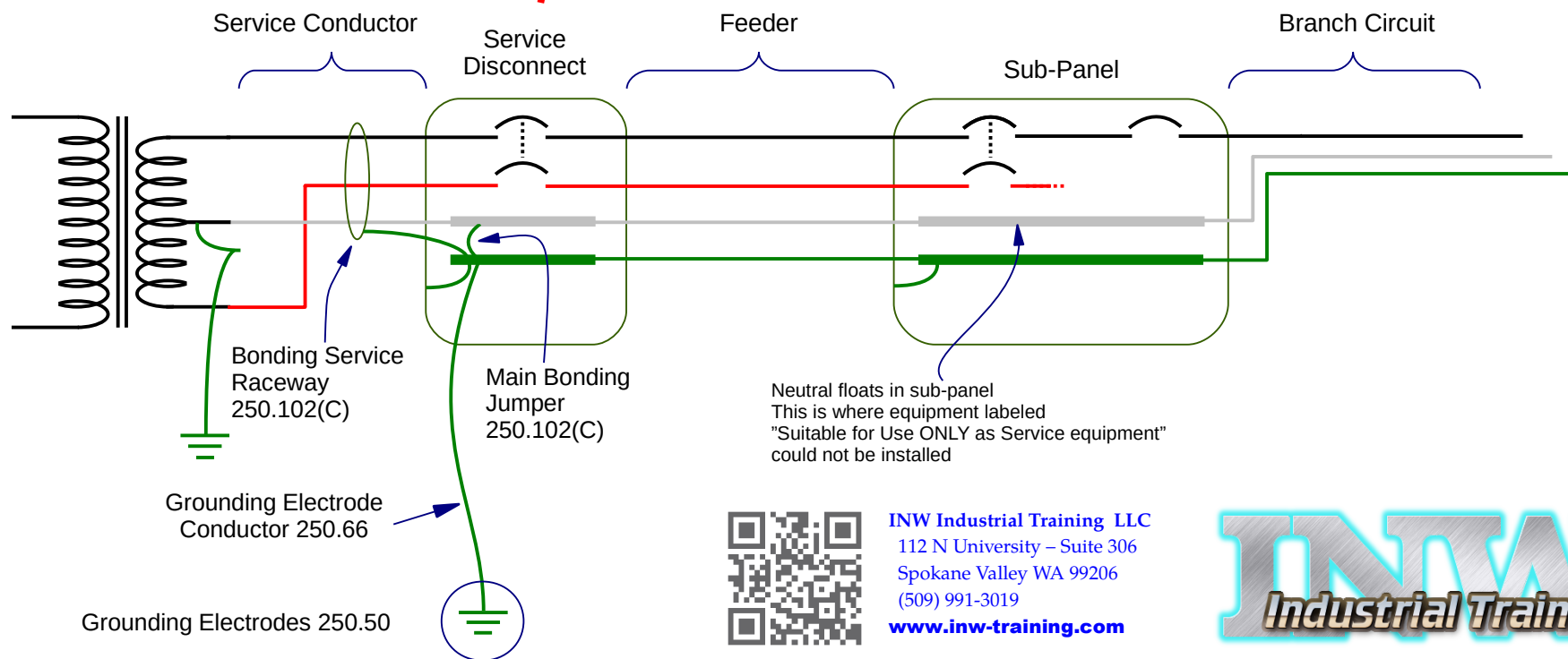


Summary of Art 230 NEC[®] Requirements relating to Service Equipment

- One drop or Lateral (230.2)
- Sizing (Art 220)

- Number of Services (230.2) One w/exceptions
- Number of Disconnects per Service (230.71) Six in *Separate* Enclosures
- SUSE Rated (230.66)
- Opens all Ungrounded Conductors (230.70)
- Indicating (230.77)
- Readily Accessible (230.72(C))
- Clearances (110.26)
- Overload Protection (230.90; 240.21(D) and size rules 240.4(B); 240.6)

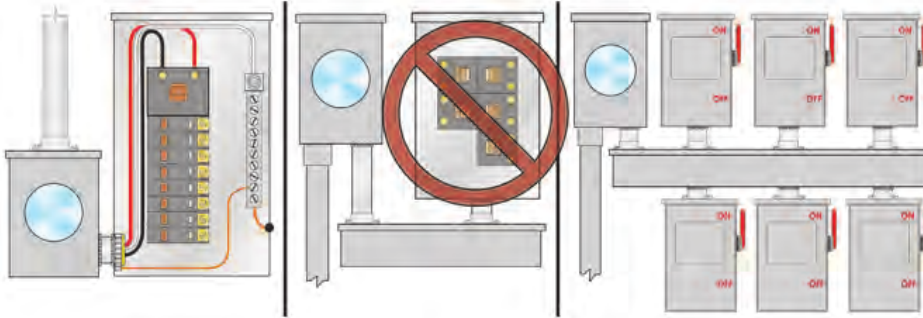


INW Industrial Training LLC
 112 N University – Suite 306
 Spokane Valley WA 99206
 (509) 991-3019
www.inw-training.com



Summary of Art 230 NEC[®] Requirements relating to Service Equipment

230.71(A) and (B) Maximum Number of Disconnects



Service disconnecting means can be any of the following:

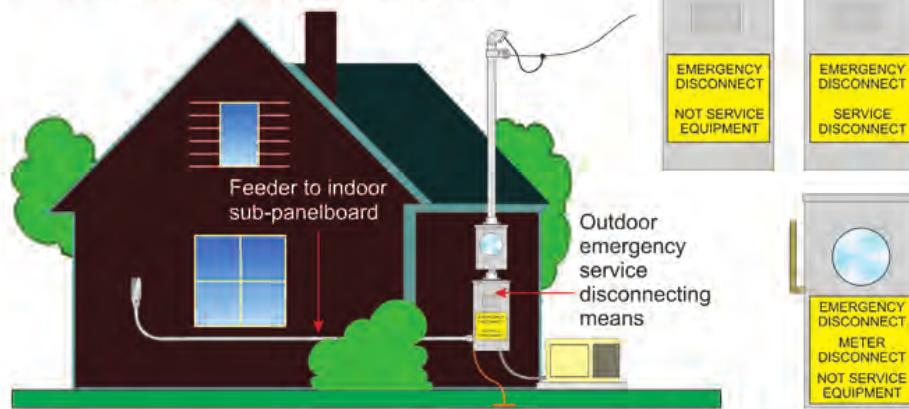
- A single "main" or...
- Up to six grouped in a single enclosure or...
- Up to six separate enclosures grouped in the same location or...
- In or on a switchboard or in switchgear (see conditions)

Source: IAEI's Analysis of the 2020NEC[®]

230.85 Exterior Emergency Disconnect(s) for Dwelling Units

All one- and two-family dwelling unit service conductors shall terminate in disconnecting means having a short-circuit current rating equal to or greater than the available fault current, installed in a readily accessible outdoor location

If more than one disconnect, required to be grouped



The 2 slides at left illustrate major changes in the 2020NEC[®]

230.71 will eliminate up to 6 disconnects in a single enclosure. One such is pictured below

3 Main Breakers in same enclosure



Courtesy: Siemens

←
230.85 will require a disconnect outside for one and two-family dwellings